

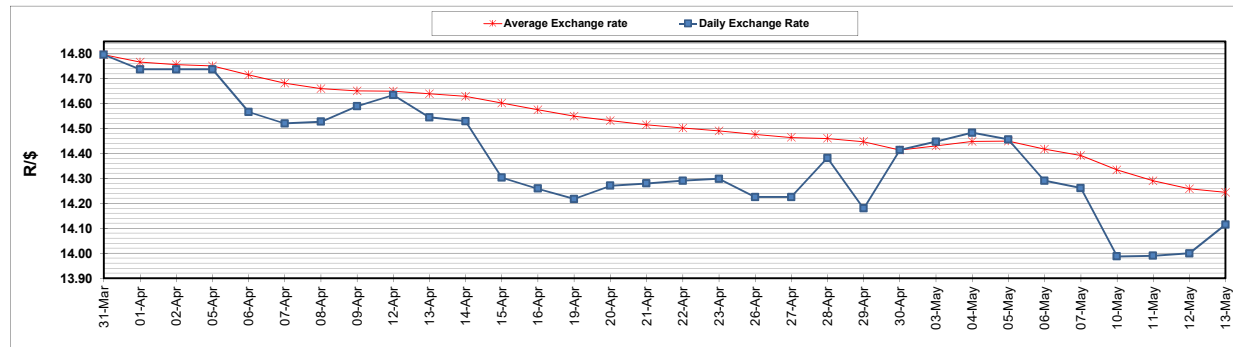
	PETROL 95 ULP	PETROL 93 ULP & LRP	DIESEL 0.05%	DIESEL 0.005%	ILL. PAR.
GAUTENG PUMP PRICE (SA c/l) AS FROM 05/05/2021	1,723.000	1,701.000	-	-	-
WHOLESALE PRICE (SA c/l) AS FROM 05/05/2021	-	-	1,446.620	1,450.020	857.488
SINGLE NATIONAL MAXIMUM RETAIL PRICE	-	-	-	-	1,076.000
BASIC FUEL PRICE - 13/05/2021 (SA c/l)	716.827	707.680	685.247	688.633	670.826
PRESS RELEASE CONTRIBUTION TO BFP 05/05/2021 - 13/05/2021 (SA c/l)	727.170	715.170	659.630	663.030	644.128
UNIT OVER/(UNDER) RECOVERY - 13/05/2021 (SA c/l)	10.343	7.490	(25.617)	(25.603)	(26.698)
AVERAGE BASIC FUEL PRICE 30/04/2021 - 13/05/2021	731.035	720.046	687.424	691.326	676.176
AVERAGE UNIT OVER/(UNDER) RECOVERY 30/04/2021 - 13/05/2021	(1.165)	(2.176)	(18.494)	(19.296)	(25.148)

### ANALYSIS MOVEMENT OF AVERAGE OVER/(UNDER) RECOVERY

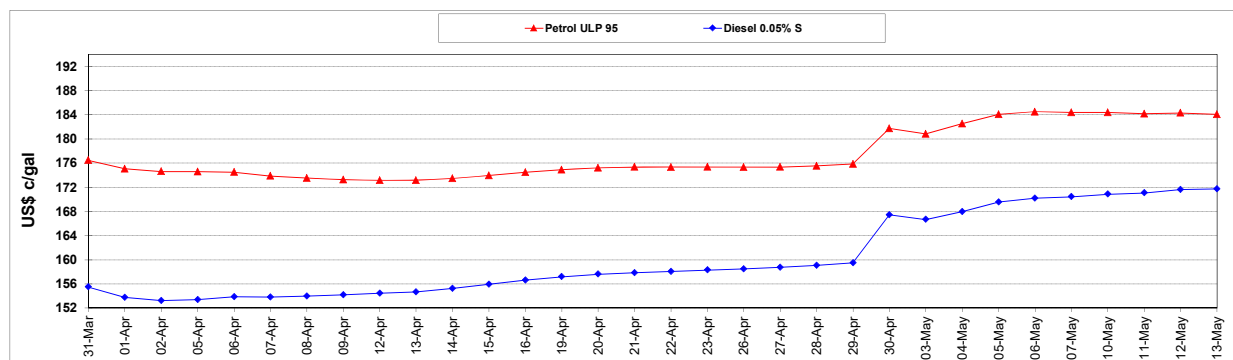
	PETROL 95	PETROL 93	DIESEL 0.05%	DIESEL 0.005%	ILL. PAR.
- MOVEMENT IN INTERNATIONAL PRODUCT PRICES	(11.604)	(12.458)	(28.310)	(29.168)	(34.803)
- MOVEMENT IN EXCHANGE RATE	10.439	10.282	9.816	9.872	9.655
AVERAGE UNIT OVER/(UNDER) RECOVERY 30/04/2021 - 13/05/2021	(1.165)	(2.176)	(18.494)	(19.296)	(25.148)

### R/\$ EXCHANGE RATE - (R/\$14.1150- 13/05/2021)

#### EXCHANGE RATE USED IN BASIC FUEL PRICE



#### INTERNATIONAL PRODUCT PRICES OF BASKET USED IN BASIC FUEL PRICE



#### BASIC FUEL PRICE IN SA CENTS PER LITRE

